

HORIZON BLUE CROSS BLUE SHIELD NEW JERSEY

ONCOLOGY CONDITION MANAGEMENT



This Document is Proprietary and Confidential
Do Not Print or Distribute Without Permission

Horizon's Global Oncology Strategy



Our vision is to develop a joint approach to oncology care delivery advancing common goals of quality, enhanced patient experience, and lower cost of care.



To do so, Horizon aims to create an oncology ecosystem amongst interested and capable New Jersey cancer care providers fostering ongoing close collaboration with several existing cancer care organizations and advancing closer collaboration with others.



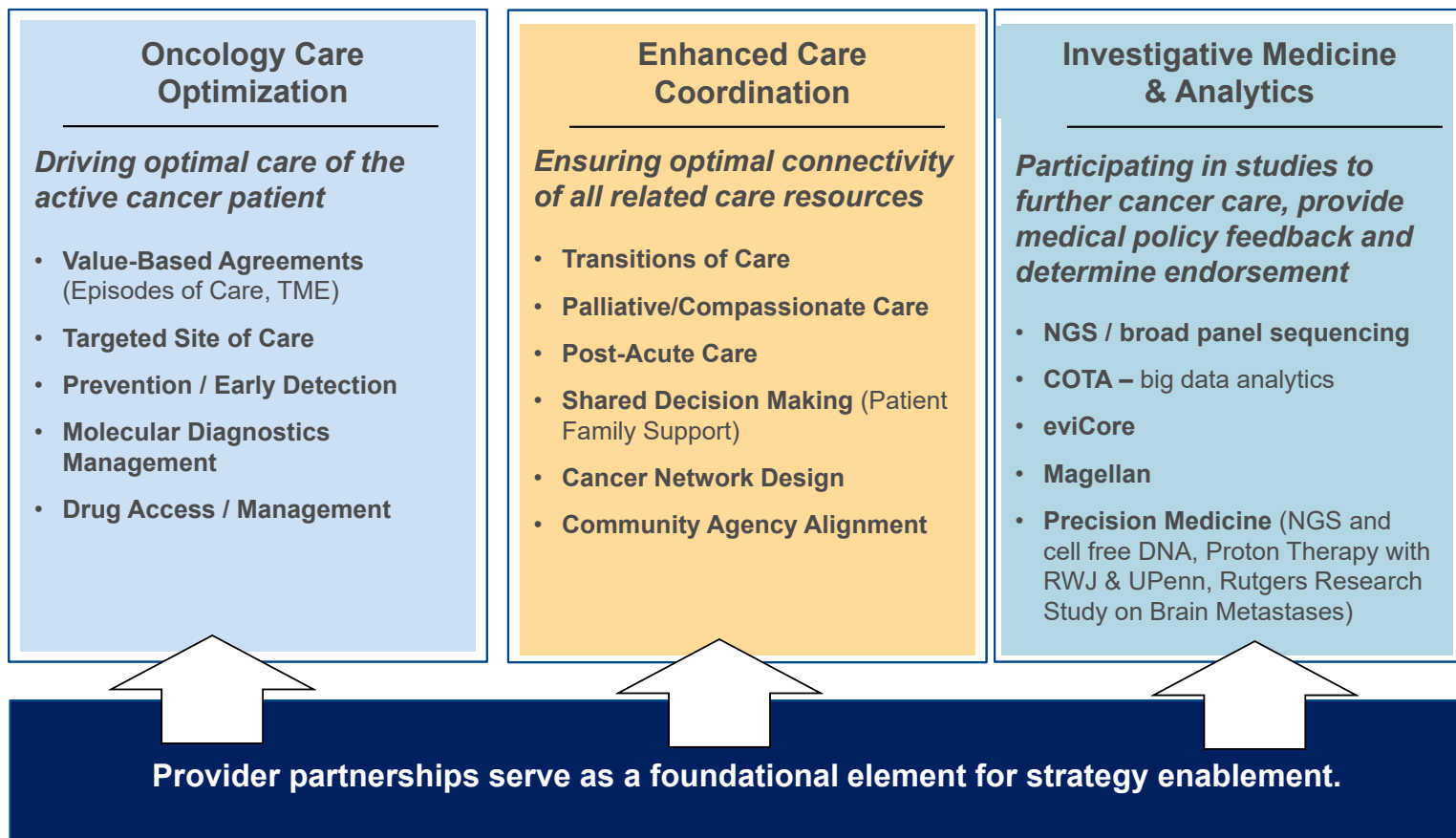
Horizon aims to implement custom oncology strategies with provider partners in the cancer care ecosystem.



Data sharing / integration is required to power precision analytics to find the Value of Precision Medicine in Real World Settings and encourage appropriate use.

Strategic Pillars for Oncology Initiatives

Horizon's Oncology Program initiatives are being designed with the intended goals to (1) reduce ineffective care/unnecessary costs for cancer care, (2) improve coordination of cancer care and patient experience, (3) explore advanced clinical solutions to cancer treatment.



Lung Cancer Bundle – Model Overview

Bundles	Design	Financial Model
<ul style="list-style-type: none">• Categorized in 2 types:<ul style="list-style-type: none">• Chemotherapy• Immuno/Targeted	<ul style="list-style-type: none">• Each episode type is based on disease progression and therapeutic options	<ul style="list-style-type: none">• Risk based bundle cancer specific

Patient Identification:

- The oncology value-based partner assigns the members into the program (“Assigned” Member)
- If a member moves into a different episode type, a new episode type is initiated and the costs for prior episode are adjusted

Duration:

- The case rate model pays at the time of service and reconciles annually, post the runoff period (larger case rate payments may be paid in 2-3 payments)

Colon , Prostate and Rectal Bundles – Model Overview

Bundles	Design	Financial Model
<ul style="list-style-type: none">• Categorized in 3 types	<ul style="list-style-type: none">• Each episode type is based on disease progression and therapeutic options	<ul style="list-style-type: none">• Risk based bundle cancer specific

Patient Identification:

- The oncology value-based partner assigns the members into the program (“Assigned” Member)
- If a member moves into a different episode type, a new episode type is initiated and the costs for prior episode are adjusted

Duration:

- The case rate model pays at the time of service and reconciles annually, post the runoff period (larger case rate payments may be paid in 2-3 payments)

Breast Cancer Bundles– Overview

Type	Design	Financial Model
<ul style="list-style-type: none">• Categorized in 6 Levels	<ul style="list-style-type: none">• Each model is based on Disease progression and therapeutic options	<ul style="list-style-type: none">• Risk based bundle cancer specific

Patient Identification:

- The oncology value based partner assigns the members into the program
- If a member moves into a different level +/- the costs are adjusted

Duration:

- The case rate model pays at the time of service and reconciles annually, post the runoff period. Larger case rate payments may be paid in two or three payments.

Other Bundle Opportunities

- **Prostate (Metastatic) – 1 Episode**
- **Head and Neck – Two Episodes**
- **Multiple Myeloma – Three Episodes**
- **Lymphoma- Two Episodes**
- **Esophageal – Two Episodes**

HORIZON BLUE CROSS BLUE SHIELD NEW JERSEY

Community Chimeric Antigen Receptor (CAR) T-Cell Therapy Pilot



**This Document is Proprietary and Confidential
Do Not Print or Distribute Without Permission**

Chimeric Antigen Receptor (CAR) T-Cell Therapy Background

CAR T-cell therapy is a cell-based gene therapy in which T-cells are collected and genetically engineered to express a chimeric antigen receptor that binds to a certain protein on an individual's cancerous cells. The CAR T-cells are then administered to the member to attack cancerous cells. The member is observed for potential serious side effects that may require medical intervention when present.

CAR – T Pilot Overview

Community Risk Pilot	Design	Financial Model
<ul style="list-style-type: none">Amerisource BergenOncology Provider	<ul style="list-style-type: none">Outpatient services for Apheresis/ChemoCommunity based program	<ul style="list-style-type: none">Fixed admin feesHome monitoringCase rate paid with oncologist/pharma at risk.Pharma/Provider/Employer/Horizon.

Patient Identification:

- The oncologist attributes the member's with B-cell ALL, diffuse large B-cell (DLBCL and primary mediastinal large B cell lymphoma).

Duration:

- The case rate model pays at the time of service (6month period) and reconciles annually.